

36th CIF

INTERNATIONAL CONFERENCE, INDIA 2025



College of Social Work, Nirmala Niketan

International Relations in a Changing World: Way Forward for Social Work



JOIN HANDS FOR GLOBAL PEACE

Date

9th to 13th November 2025

Venue

Tata Institute of Social Sciences (TISS) Mumbai

Jointly organised by

Indian Council for International Programmes Fellowship (CIF-India)

Tata Institute of Social Sciences (TISS)

College of Social Work, Nirmala Niketan, Mumbai

You are invited!

Social Work Practitioners

CIF Members - National & International

Academicians

Research Scholars

Representatives from Civil Society & Social Work Institutions

The world is undergoing rapid and profound changes in this 21st century. These include the effects of globalization, digitization, environmental degradation, migration, conflict and human rights violations to mention a few. These changes pose new challenges and opportunities for social work, as a profession aimed to promote social justice, human dignity and well-being. Social work has a long history of engaging with international issues and actors. It needs to adapt and innovate to respond to the emerging needs of this changing world.

In this context, we need to recognise that social problems and solutions are not isolated within national boundaries, but in an increasingly porous world, we are all deeply interconnected and interdependent across different nations at different levels and domains of social life. Such an international relational perspective also acknowledges the diversity and complexity of human experiences and identities, and the need to respect and empower the voices and agencies of the people affected in similar and yet, significantly varying ways. Hence a perspective can help social workers to:

- Develop a global and critical awareness of the historical, political, economic, cultural and other factors that shape the causes and consequences of social problems, and the potential and limitations of social policies and interventions;
- Network with other social workers and professionals from different regions, disciplines to exchange knowledge, skills and resources and to advocate for beneficial change in varying societies, thus co-creating solutions that are culturally appropriate, participatory and sustainable.

Therefore, the theme of Social Work and International relations in a changing world offers challenges and opportunities for the social work profession. The social work profession can contribute to the development of a more peaceful, inclusive, and sustainable world in which the values and principles of human rights, social solidarity and global citizenship are fostered.

COLLABORATING PARTNERS

CIF India Founded in 1980, is the national branch of the Council of International Fellowship (CIF). This promotes international exchange and cultural immersion among professionals in social work and human services.

CIF India fosters cross cultural understanding, peace, and professional growth across borders. CIF India previously hosted conferences at Mumbai in 1981 and at Goa in 2003.

Tata Institute of Social Sciences (School of Social Work) is a deemed university established in 1936.

TISS is India's first School of Social Work. It is one of Asia's leading research and teaching institutions in the social sciences and has campuses across India. It is known for its pioneering work in social work education, public policy, development, gender studies and more.

College of Social Work, Nirmala Niketan is an autonomous institution since 1955. The college is committed to academic excellence, social transformation, and field-based learning. Known for its community engagement research & innovation. It offers diverse programs like BSW, MSW, MA in social innovation and entrepreneurship and PhD. The institute has received recognition from various government & private bodies.



SUB-THEMES & CALL FOR PAPER

a. Building Global Peace and Amity

When Social work professionals focus on creating a world that respects and celebrates human dignity and diversity, they can foster global peace and amity in our world. Papers could focus on sharing experiences of, and reflections on, peace building, especially those that offer a critical analysis that helps to identify causes and drivers of violence, injustice, and inequality; or that showcase an ethical and cultural sensitivity to respond to complex and dynamic situations.

c. Fostering Equality for Sustainable Development and Ecological Justice

In today's global landscape, social, economic, and environmental challenges disproportionately impact marginalised communities. While international policies often claim to support development and sustainability, the active representation of least developed and developing countries in global discussions remains inadequate. Vulnerable groups continue to face injustices related to resource extraction, hazardous waste disposal, and limited access to governance. Submissions can highlight intervention models that include on inclusive governance, education and resource justice.

e. Enhancing Couples, Family and Social Relationships

Changes in contexts related to diversities of culture, geography and systemic factors influence the ways in which family forms, interactions and relationships are enacted, navigated and transacted. This theme pertains to interactions, relationships & consequences of global and local changes that influence families both within and outside. Submissions are expected on the conceptual or theoretical expansion and innovative interventions that enhance wellbeing.

g. Nurturing Children, Global Greying and Social Security

This sub-theme explores the dual demographic challenge facing the world today—an ageing population alongside declining birth rates, compounded by global shifts in family dynamics, mobility, and environmental instability. It highlights how social workers are central to navigating this complex landscape.

b. Respecting Cultural Diversities

This theme highlights the importance of cultural and ethnic identities in shaping social dynamics and international relations. It addresses challenges arising from plural cultural interactions and the policies for diverse communities. Emphasis is placed on fostering sensitivity, inclusion, and mutual respect through social work. The role of institutions in promoting cultural harmony is also central. Papers should explore innovative practices and policies that embrace diversity and equity.

d. Creating Inclusion in a Diverse World

Marginalized and vulnerable groups such as women, girls, persons with disability, LGBTQIA+, religious, racial, and ethnic minorities, as well as children in vulnerable situations, are at greater risk due to social inequalities, injustice, and global crises, such as the COVID-19 pandemic. Inclusion is founded on normalization and the principles of affirmative action, equality, human rights, and quality of life, as well as promoting inclusion for all. The focus is on the challenges social workers face in this context, as well as their initiatives, innovative strategies, and interventions adopted by them.

f. Challenges for Social Work in an Increasingly Digitalized World

Paper presenters may focus on the transformative potential or destructive tendencies/ethical dilemmas of using technology and AI in the field of social work. How can social workers be better prepared to deal with the interface between AI and social work can be the focus of this subtheme. Further, innovative interventions and strategies used by social workers using AI can also be presented under this sub theme.

IMPORTANT DATES

Abstract Submission : 30th August, 2025
(maximum 500 words)

Notification of acceptance of abstract : 15th September, 2025

Full paper submission : 15th October, 2025

P.S.: With prior approval, a full paper can be presented directly at the conference and submitted at the conference venue.



ABSTRACT SUBMISSION GUIDELINES

- Abstracts must be focused on a specific sub theme.
- Use Times New Roman 12-point font, double spaced.
- Abstract title - limited to 15/20 words in UPPER CASE.
- Abstract text – Up to 500 words and provide 3-4 keywords.
- Provide contact details of the presenting author when the abstract is submitted.

SUBMISSION RULES FOR A FULL PAPER

- Papers will be based on research/field interventions/field experience/case study etc.
- **Format for Full Papers:** Title - Name, affiliation and email of Author(s) - Abstract - Keywords - Introduction - Conceptual/ Theoretical Framework (if applicable) - Methodology/Approach - Findings of Research/Field Intervention Models/Practice Experience/Case Study - Discussions and Conclusions
- Paper should be in double spaces.
- The maximum length of the submission is 20 pages (including title page and all figures, tables, appendices and references) - limited to 5,000 words.
- APA Referencing Style to be followed.
- Numbering the pages in the document is essential.
- Submitted papers must NOT have been previously presented, scheduled for presentation, published, or accepted for publication by any other source (journal, publishers or any other organization).
- Abstracts and full papers may be sent to indiaconference25@gmail.com in MS doc/docx format
- Participants must register prior to the registration deadline in order to present their papers. All authors must register.

HELP DESK FOR INTERNATIONAL DELEGATES

- The participants with Conference Visa or Business Visa can attend the conference.
- The registration payment can be done at the receipt of confirmation mail from the organisers.
- Write to us : indiconference25@gmail.com
- For queries/support kindly contact:



Mr. Ratnakar Khaire : +9198201 65156

Dr. Priyadarshini Deo : +91 93204 19975

Ms. Rupa Kamath : + 91 79773 60443 / 84336 10116



REGISTRATION

NATIONAL DELEGATES		INTERNATIONAL DELEGATES	
Registration fee (till 30 th September, 2025)	₹6500	Registration fee (till 10 th August, 2025)	\$446
Registration fee (1 st October, 2025 onwards)	₹7000	Registration fee (from 11 th August to 15 th September, 2025)	\$458
Registration fee (for any 2 days of Conference) (The 'Schedule Overview' is given below for your reference)	₹3500	Accompanying Person (for more details, contact indiconference25@gmail.com)	\$235
<u>REGISTRATION LINK FOR NATIONAL DELEGATES</u>		<u>REGISTRATION LINK FOR INTERNATIONAL DELEGATES</u>	

The conference fee includes lunch, dinner, tea, snacks, and a conference kit. It also covers internal travel (institutional visits and a city tour) for international delegates.

Account Name : Indian Council for International Programmes Fellowship
 Account Type : Savings
 Account Number : 52090710042
 Bank Name : State Bank of India
 IFSC Code : SBIN0020313
 Branch Name : Sion, Mumbai
 (Branch Code 20313)



**Payment Link for
Registration Fee by
International Delegates**

Note: Payment gateway process conference fee in the following headers:

- 36th CIF International Conference India, November 9-13, 2025 - Early Bird Conference Registration till 10 August 2025 - USD 446 (Per Person)
- 36th CIF International Conference India, November 9-13, 2025 - Conference Registration from 11 August to 15 September 2025 - USD 458 (Per Person)
- 36th CIF International Conference India, November 9-13, 2025 - Accompanying Person USD 235 (Per Person)



**Gpay QR Code for
Registration Fee
Payment by
National Delegates**



SCHEDULE OVERVIEW

Day 1 November 09, 2025	Registration /collecting conference kits at the venue Inauguration Informal Interaction among delegates Keynote Address Cultural Evening
Day 2 November 10, 2025	Plenary Session Parallel Workshop Paper Presentations - Parallel Sessions Market of the Nation
Day 3 November 11, 2025 <i>(Additional charges for the Indian delegates)</i>	Institutional / NGO Visits (in groups) & Discovery of India (Exhibition-Museum and Photo gallery Ancient India till Modern India) (or) Heritage Walk - Multicultural Living in Mumbai (or) Exhibition - Museum and Photo Gallery of Life of Mahatma Gandhi
Day 4 November 12, 2025	Plenary Session Parallel Workshop/Paper presentations <u>Events scheduled exclusively for CIF Members:</u> Meet and Greet Proposed Candidates National Branches Meeting Executive Committee Election Farewell Dinner (for all participants)
Day 5 November 13, 2025	<u>Events scheduled exclusively for CIF Members:</u> New EC Elected Members Meeting General Assembly Closing Ceremony (for all participants) Mumbai City Tour (optional)

LODGING AND BOARDING

- Book your accommodation directly with the listed hotels using the provided contact details, or feel free to choose any hotel of your preference.
- Listed hotels are approximately in the radius of 1.5 km of the venue. [Click here for list of hotels.](#)
- On booking confirmation with respective hotels, mark a CC to conference email id indiconference25@gmail.com

For queries/support kindly contact:



Ms. Seema Redkar : +9198201 65156

Mr. Siddharth Ughade : +91 98692 71289

Mr. Vijay Jawlekar : +91 99691 52304 / 90827 74671

Ms. Rupa Kamath : + 91 79773 60443 / 84336 10116



CIF – India Governing Board

President:

Dr. Virochan Raote

Vice President:

Ms. Iva Athavia

Secretary:

Mr. Sidharth Ughade

Jt. Secretary:

Ms. Seema Redkar

Treasurer:

Dr. (Ms). Uma Jadhav

Jt. Treasurer

Mrs. Meenal Thakore

Imm. Past President:

Mr. Ratnakar Khaire

Members:

Ms. Sangita Mehrotra

Ms. Meera Shah

Mr. Vijay Gaikwad

Mr. Prashant Shinde

Mr. Vijay Jawlekar

Organising Committee

Prof. Bipin Jojo, Convenor, Professor & Dean,
School of Social Work, TISS

Dr. Virochan Raote, Convenor, President,
CIF India

Prof. Lidwin Dias, Principal, College of Social
Work, Nirmala Niketan, Mumbai

Prof. Helen Joseph, Representative, College of
Social Work, Nirmala Niketan, Mumbai

Mr. Sidharth Ughade, Secretary, CIF India

Ms. Seema Redkar, Jt. Secretary, CIF India

Dr. (Ms). Uma Jadhav, Treasurer, CIF India

Mr. Ratnakar Khaire, Imm. Past President,
CIF India

Ms. Sangita Mehrotra, Member, CIF India

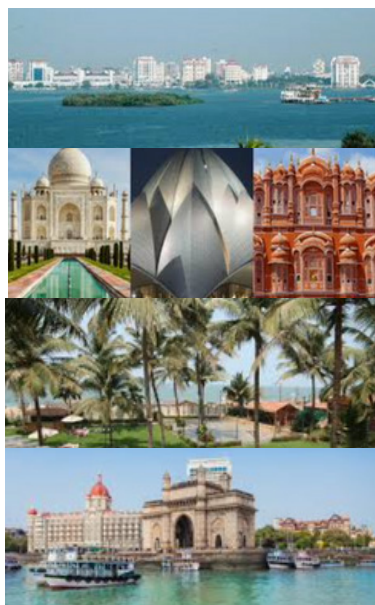
Prof. Srilatha Juvva, Faculty, TISS

Prof. Sandhya Limaye, Faculty, TISS

Dr. Madhura Nagchoudhuri, Faculty, TISS

POST CONFERENCE TOURS

- Facilitated by the conference organizers.
- For more details [click here](#)

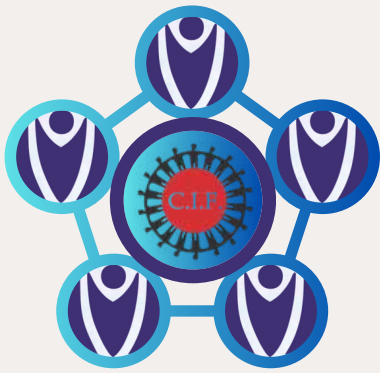


Kochi, Kerala
(*God's own country*)
4 nights & 5 days

Jaipur, Agra & Delhi
(*Golden Triangle*)
4 nights & 5 days

Goa (Heritage Goa)
3 nights & 4 days

Mumbai (Essence of Mumbai)
3 nights & 4 days

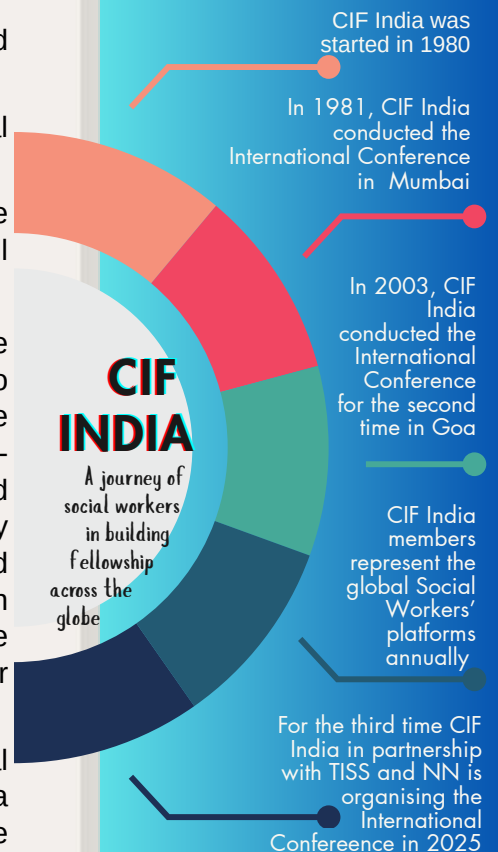


CIF India Membership Process

- The Council of International Fellowship is one of the largest International Professional Body of Social Workers (<https://cifinternational.com/>).
- The membership is meant for individual social workers and not organisational-based.
- The CIF International has its presence in 29 countries with its integrated program CIP located in the USA (<https://www.cipusa.org/>).
- CIF India is the Country Branch of CIF International. It has professional social workers across the country with life membership.
- CIF India's key activity is to organise International Professional Exchange Programs (IPEPs) inviting international participants from various countries all over the world.
- CIF-India's key endeavor is to organise International Professional Exchange Programs (IPEPs) that invite participants from diverse nations while also facilitating opportunities for Indian professional social workers to acquire valuable experience abroad at different CIF National Branches. The IPEPs-India combine practical and theoretical information about the social and cultural environment of the Indian setting. An IPEP is the golden opportunity for social work professionals, social welfare, and human services & related fields, young and experienced across globe to visit India and meet with fellow professionals from around the world. This program provides the chance to exchange with professionals around the world throughout your entire professional career.
- The IPEP-CIF India provides an opportunity to observe, discuss about social work practice in Indian setting; to share ideas, values and experiences with a multinational group of fellow professionals on similar placements and to live with Indian local families and find out about their culture and way of life.
- IPEP-CIF India has following main pillars:
 - Professional exchange in the IPEP CIF INDIA enables each participant brings his/her personal expertise and knowledge.
 - Provides orientation to the local and regional cultural-social-political and organisational structure, introduction to the current social services system in the country.
 - Theoretical and practical experience in observing social workers and other related professionals in well-chosen agencies and organisations living in host families.
 - Social and cultural group activities during the program.



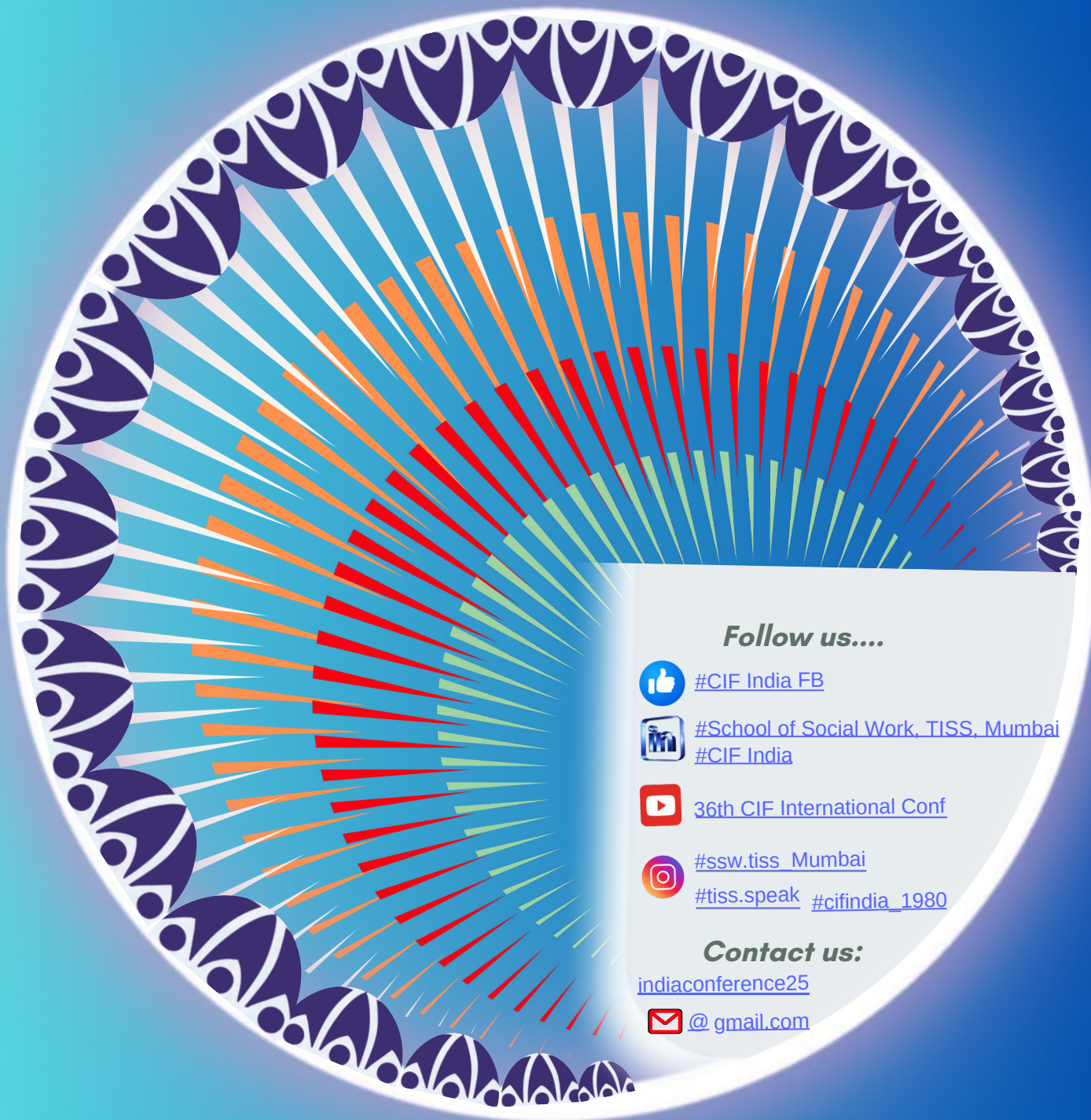
**BECOME A
MEMBER OF
CIF INDIA
TODAY**



**To become a member,
contact us!**

Call: +91 7977360443
Email: cifindia80@gmail.com





Follow us....



[#CIF India FB](#)



[#School of Social Work, TISS, Mumbai](#)
[#CIF India](#)



[36th CIF International Conf](#)



[#ssw.tiss Mumbai](#)
[#tiss.speak](#) [#cifindia_1980](#)

Contact us:

[indiaconference25](#)



[@ gmail.com](#)

Location

TISS

